

Manna Gum

2 bed 1 bath 115m²



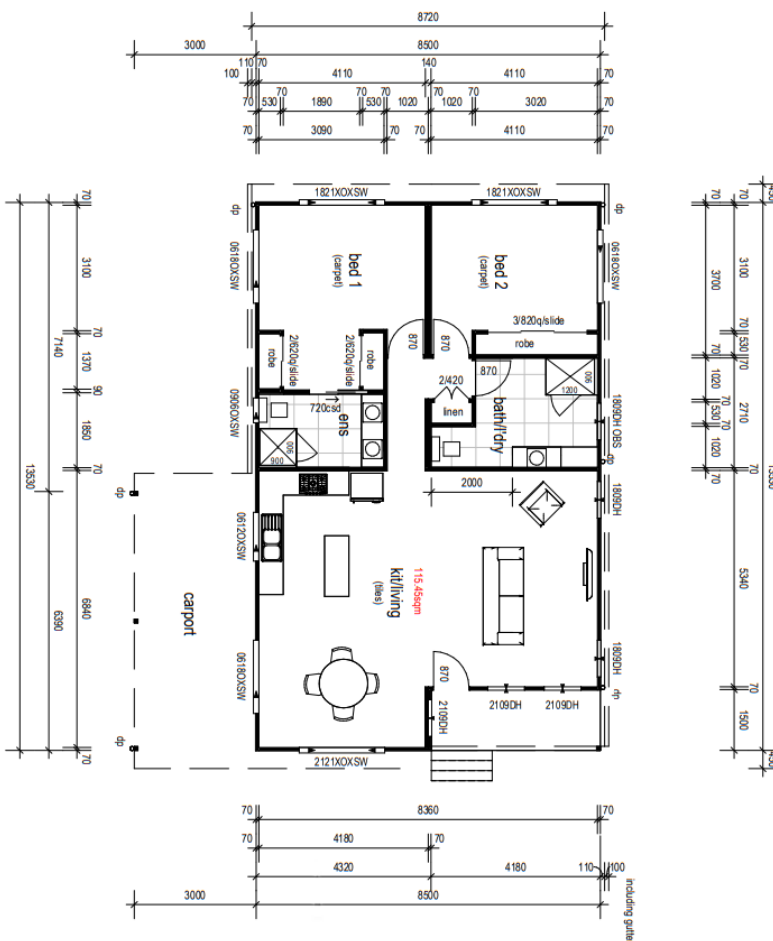
About this design

The *Manna Gum* is a thoughtfully designed home that offers more room to move, live, and relax. Featuring **two generous bedrooms**, this layout brings comfort and functionality to compact living.

The **master bedroom** includes its own **private ensuite** and built-in robes, making it a true retreat within the home. The **second bedroom** is equally roomy and located conveniently near the main bathroom.

At the heart of the home is a **light-filled open plan kitchen, dining, and living area**, perfect for daily living or entertaining guests. Step outside onto the covered front deck to enjoy the outdoors in comfort.

With a modern skillion roofline and efficient use of space, the *Manna Gum* delivers a blend of **style, space, and liveability**—all within a compact footprint.



Quality Construction

We prioritise strength and durability in every build.

Speed & Efficiency

Built in a controlled workshop environment, free from delays.

Sustainable & Cost Effective

Energy-efficient solutions for lower living costs or off-grid living.