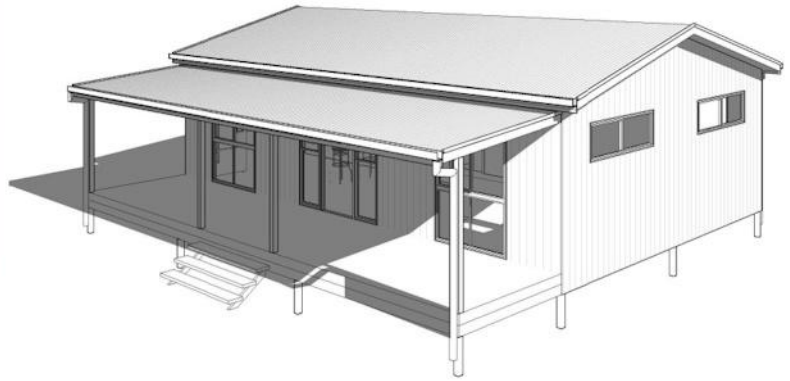


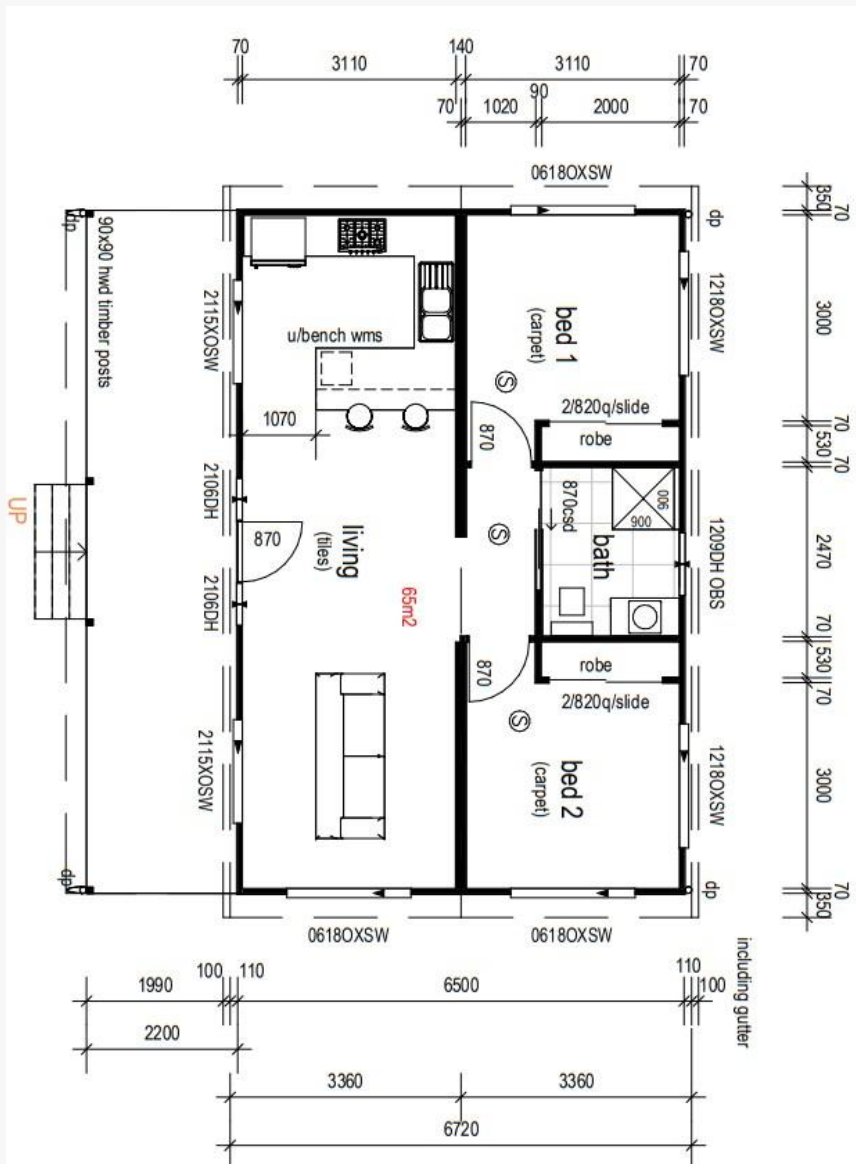
Mulga

2 bed 1 bath 85m²



About this design

A versatile & comfortable 2-bedroom design, Mulga is ideal for small families or individuals. With built-in wardrobes, an ensuite, & a welcoming open-plan living area leading to a front deck, this home balances practicality with a stylish, modern layout.



This 2-bedroom floor plan offers a practical & comfortable layout, ideal for small families or individuals. Each bedroom includes built-in wardrobes, with Bedrooms featuring a shared centred bathroom.

The open-plan living area connects the lounge, dining, & modern kitchen, creating a welcoming space for daily living & entertaining. A front deck extends the living area outdoors, perfect for relaxing or hosting guests. Thoughtful storage & a functional design make this layout both efficient & versatile.



Quality Construction

We prioritise strength and durability in every build.



Speed & Efficiency

Built in a controlled workshop environment, free from delays.



Sustainable & Cost Effective

Energy-efficient solutions for lower living costs or off-grid living.