

Waratah



2 bed



1 bath

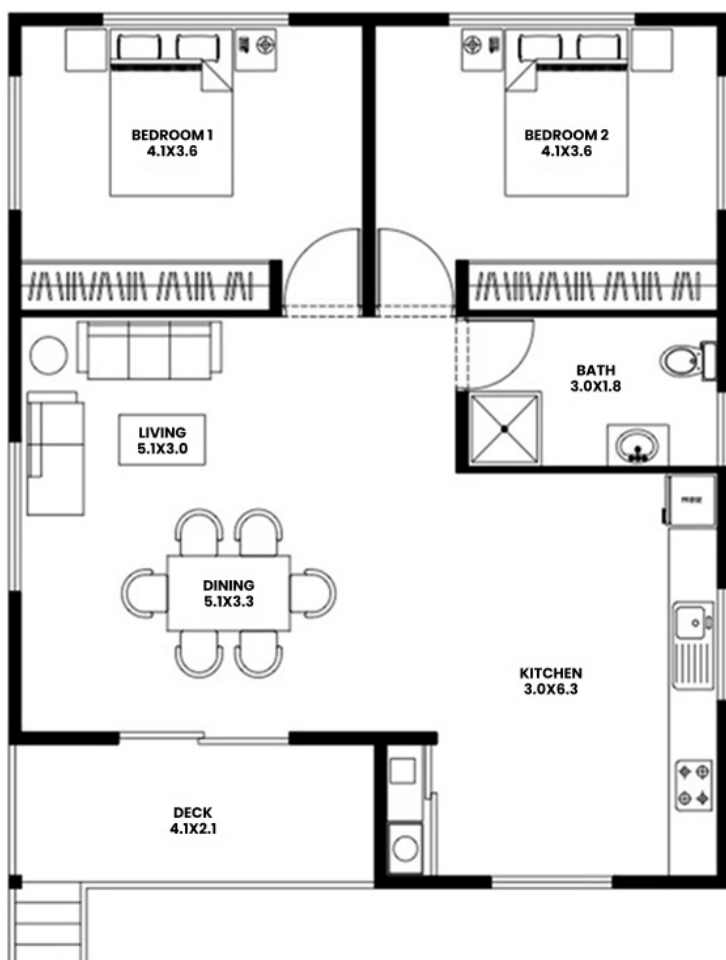


101m²



About this design

The Waratah is a 2-bedroom modular home that is ideal for small families, couples, or downsizers. The design features equal-sized bedrooms, a centrally located bathroom, and an open-plan living area that connects to a front deck, creating a comfortable and functional living space.



The layout is simple and efficient, with both bedrooms featuring built-in wardrobes and positioned side by side for convenience. The centrally located bathroom provides easy access for all. The open-plan living area integrates the lounge, dining, and kitchen, offering a spacious and inviting environment for daily living and entertaining.

The front deck extends the living area outdoors, providing a great spot for relaxation. With its thoughtful design, this home offers a perfect balance of comfort and practicality.



Quality Construction

We prioritise strength and durability in every build.



Speed & Efficiency

Built in a controlled workshop environment, free from delays.



Sustainable & Cost Effective

Energy-efficient solutions for lower living costs or off-grid living.